



บริษัท เอดีดี เฟอร์เนส จำกัด

ADD FURNACE CO.,LTD.

44 ซอยบรมราชชนนี 70 ถนนบรมราชชนนี แขวงศาลาธรรมสพน์ เขตทวีวัฒนา กรุงเทพฯ 10170

โทร: 02-888-3472 โทร: ออกแบบ:08-08-170-170 แฟกซ์: 02-888-3258

https://www.add-furnace.com E-mail: sales@add-furnace.com



TV VALVE

TV

TV - US - Ed.3 - November 2018

This is a general specification leaflet ; for specific applications not covered herein, contact Suntec.

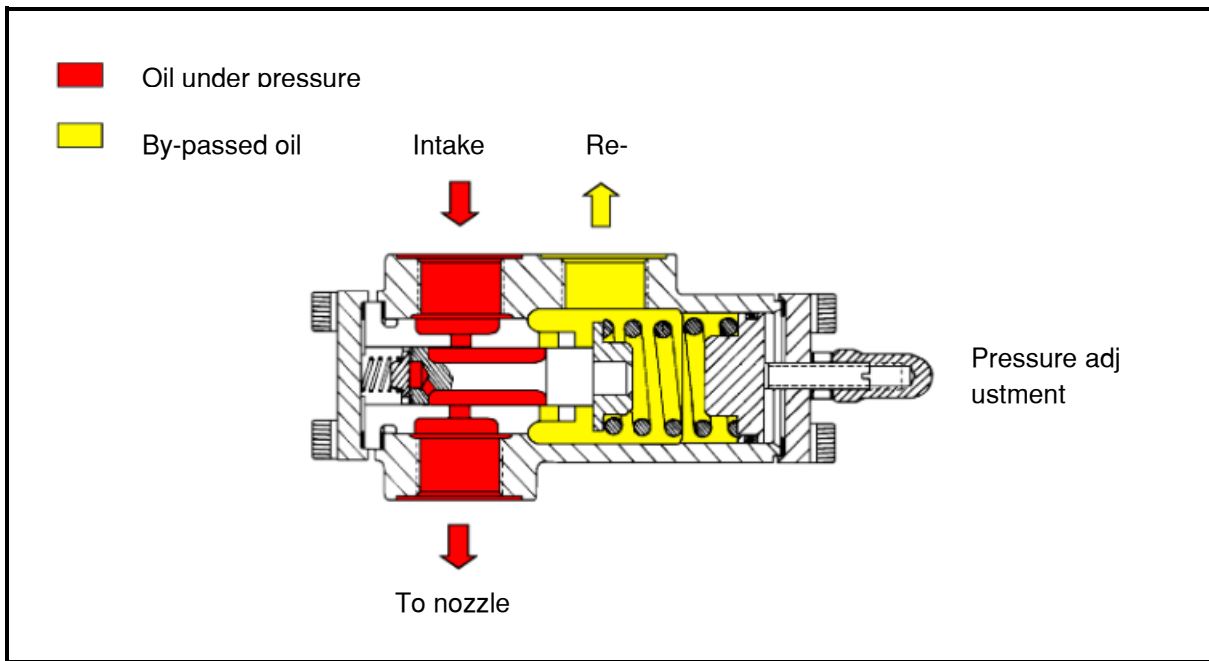
The SUNTEC TV valve is a pressure regulating valve.

APPLICATIONS

- Fuel oil #2 to #6, B6-B20 (blends from 6% up to 20% biodiesel, per ASTM D396).
- Capacity up to 1300 GpH.
- May be used with the SUNTEC T pump.

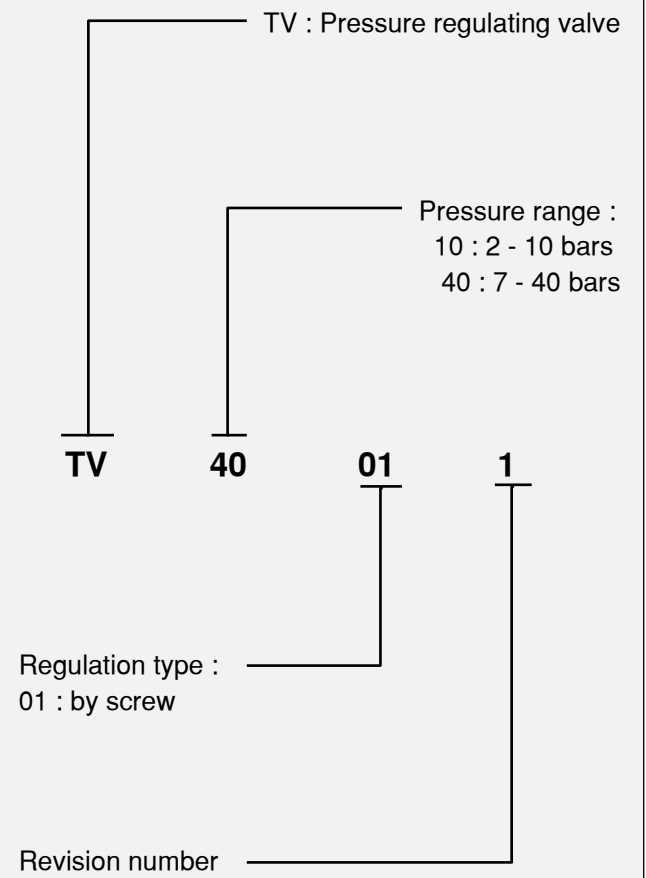
VALVE OPERATING PRINCIPLE

The pressure of the nozzle line is adjusted with the adjusting screw of the TV valve. The oil in excess to nozzle requirement is dumped to the return.



VALVE IDENTIFICATION

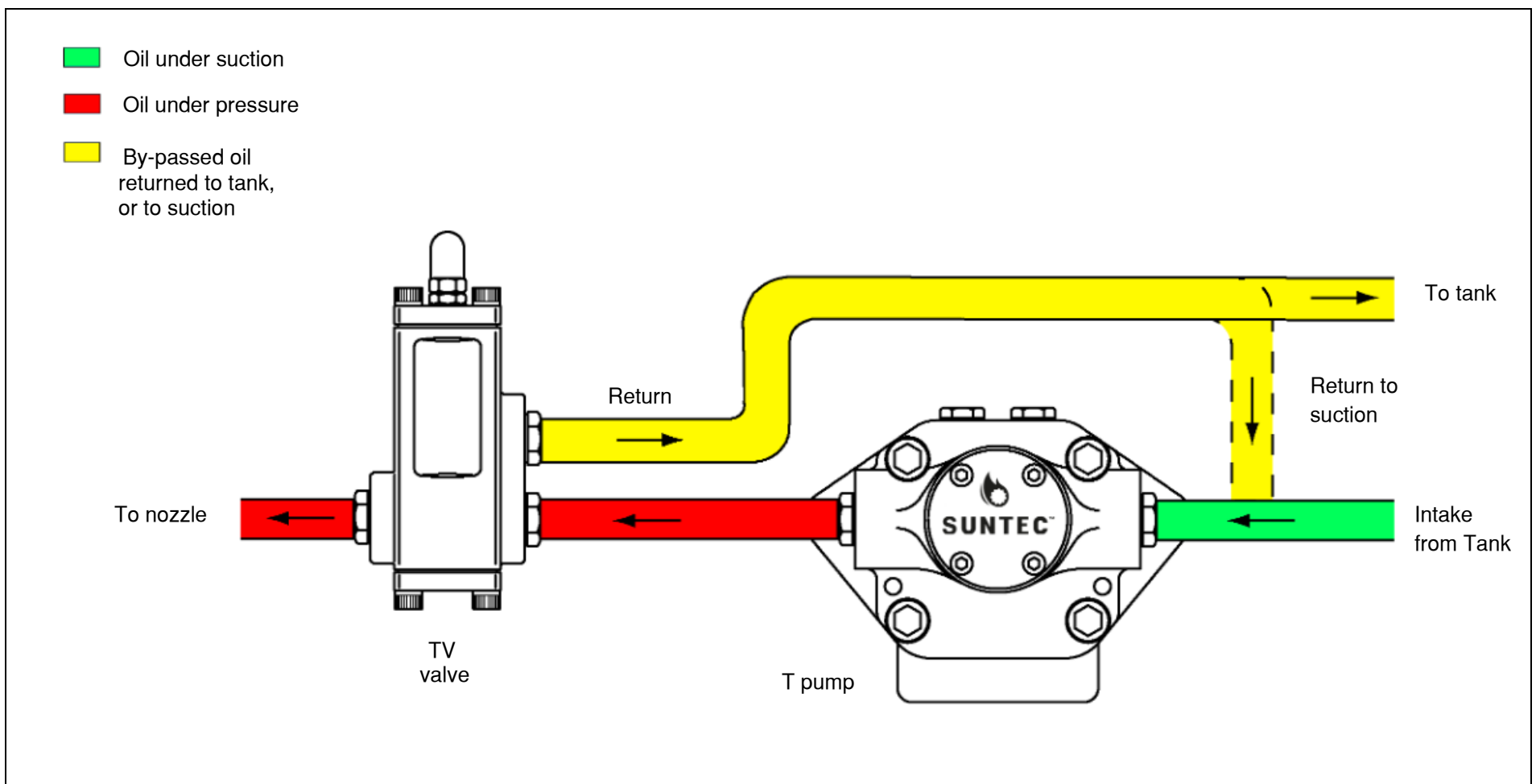
(Not all model combinations are available Consult your Suntec representative)



INSTALLATION

Two pipe system : oil in excess is returned to tank.

One pipe system : oil in excess is returned to pump suction.





บริษัท เอดีดี เฟอร์เนส จำกัด

ADD FURNACE CO.,LTD.

44 ซอยบรมราชชนนี 70 ถนนบรมราชชนนี แขวงศาลาธรรมสพน์ เขตทวีวัฒนา กรุงเทพฯ 10170

โทร: 02-888-3472 โทร: ออกแบบ:08-08-170-170 แฟกซ์: 02-888-3258

https://www.add-furnace.com E-mail: sales@add-furnace.com

TECHNICAL DATA

General

Connection threads	Cylindrical according to ISO 228/1
Inlet	G 3/4
Nozzle outlet	G 3/4
Return	G 3/4
Weight	6,6 IBs

Hydraulic data

Pressure ranges	10 : 30 - 145 psi (delivery pressure setting : 100 psi) 40 : 100 - 580 psi (delivery pressure setting : 290 psi)
Operating viscosity**	2,4 - 75 mm ² /s (cSt) (Higher viscosity oil can be used by heating the oil to lower its viscosity under 75 cSt)

Oil temperature	32 - 302°F max in the valve
-----------------	-----------------------------

MOUNTING POSITION

TV valve may be mounted in any position.

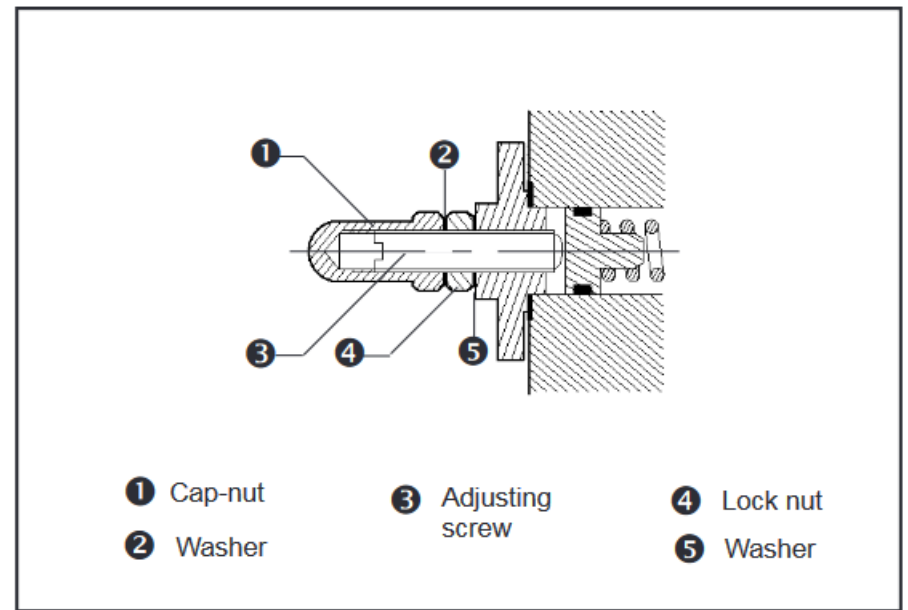
PRESSURE ADJUSTMENT

Remove cap-nut ① and washer ②, unscrew lock-nut ④.

To increase pressure, turn adjusting screw ③ clockwise.

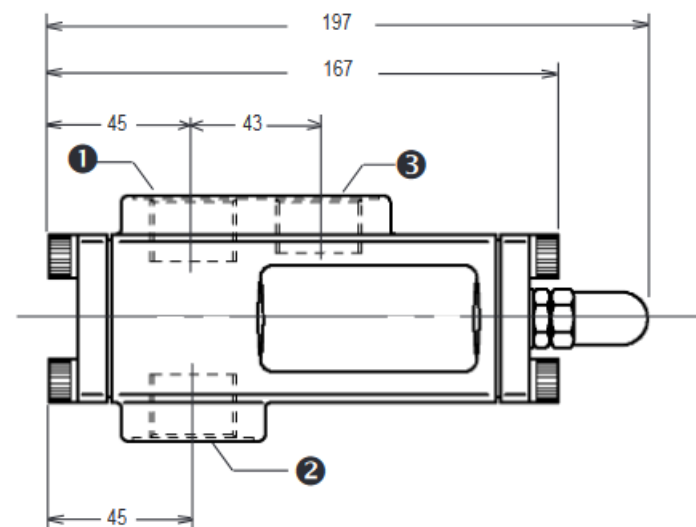
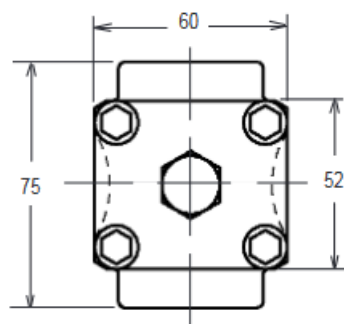
To decrease the pressure, turn screw anticlockwise.

Block lock-nut ④, refasten washer ② and cap-nut ①



DIMENSIONS

Note : Dimensions in mm



① Intake or nozzle outlet

② Nozzle outlet or intake

③ Return