



บริษัท เอดีดี เฟอร์เนส จำกัด

ADD FURNACE CO.,LTD.

44 ซอยบรมราชชนนี 70 ถนนบรมราชชนนี แขวงศาลาธรรมสพน์ เขตทวีวัฒนา กรุงเทพฯ 10170

โทร: 02-888-3472 โทร: ออกแบบ:08-08-170-170 แฟกซ์: 02-888-3258

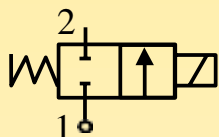
<https://www.add-furnace.com> E-mail: [sales@add-furnace.com](mailto:sales@add-furnace.com)

## Solenoid Valves for Automation

2/2 way - Normally Closed - Direct operated

Fittings: Rp = 1/8" - 1/4"

Series **131.4**

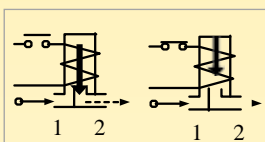


**N.C.**

**Normally closed**

Coil energised - open

Coil de-energised - closed



### General description:

PARKER series **131.4** solenoid valves are direct operated.

They are used for general applications with media such as **inert gases and light oils (2 E)**.

Series **131.4** valves are **normally closed**.

### Temperatures:

The working temperature for media is:

maximum **+140°C**

minimum **-10 °C**

The maximum ambient temperature is:

- with class "F" : **+50 °C**;

- with class "H" : **+80 °C**.

### Application:

Series **131.4** solenoid valves are used for the automatic control of media where low flow rates are required.

Some examples of applications are:

- welding machines with controlled atmosphere;
- diesel oil burners;
- gas analysers;
- fumes analysers;
- distribution of light oils;
- measurement and control instruments;
- lubrication systems.

### Coils:

For series **131.4** valves class "F" coils (**155°C**), encapsulated in thermoplastic containing 30% glass fiber (type KT), are available.

All the coils are for continuous service, 100% E.D.

The rated voltage tolerance is:

**±10% for A.C.** power supply and

**+10% -5% for D.C.**

The "K" coil can be used on a.c. with frequency 50 Hz or 60 Hz (single frequency) and has Faston terminals for **DIN 43650A** connector with protection to **IP65**.

### Installation:

The valves can be mounted in any position without jeopardising their operation. It is however advisable to install them with the coil in a vertical position above the body. The valve body has 2 mounting holes diam. M4 x 7 with centre distance 13 x 13.

### Approvals:



- For the coils:

**KH 09** 115V/50Hz

230V/50Hz

**KT 09** 115V/50Hz

220-230V/50Hz



Series **131.4**



บริษัท เอดีดี เฟอร์เนส จำกัด

ADD FURNACE CO.,LTD.

44 ซอยบรมราชชนนี 70 ถนนบรมราชชนนี แขวงศาลาธรรมสพน์ เขตทวีวัฒนา กรุงเทพฯ 10170

โทร: 02-888-3472 โทร: ออกแบบ:08-08-170-170 แฟกซ์: 02-888-3258

https://www.add-furnace.com E-mail: sales@add-furnace.com

for: inert gases - light oils (2 E)

MATERIALS			ELECTRICAL	Coil type [   ]		Power [   W ]		Insulat. class
	• Valve body:	CW617N UNI EN 12165:98 brass stamping		A.C.( ~ )	D.C.( = )	A.C.( ~ )	D.C.( = )	
	• Seals:	Viton						
	• Enclosing tube:	CW614N UNI EN 12164:98						
	• Plunger:	9SMnPb23 UNI 5105 steel with nickel						
• Spring:	AISI 302 stainless steel	KT 09 KH09	KT 10 -			F H		
• Shading ring:	Copper							

SPECIFICATION	Fittings Ø Rp	Valve type	Nominal orifice Ø	Flow coefficient Kv	Minimum pressure	Max differential pressure (M.O.P.D.)		Coil type	Weight	Notes
	[ " ]	[ ]	[ mm ]	[ m³/h ]	[ bar ]	in A.C.(~ ) [ bar ]	in D.C.(= ) [ bar ]	[ ]	[ Kg ]	[ ]
	1/8	131.4 BV	2,8	0,174	0	8	6	K	0,200	1
	1/4	131.4 FV	2,8	0,174	0	8	6	K	0,220	1
	1/4	131.4 GV	4,0	0,318	0	2	1	K	1,220	1

Note: 1) NP (nominal pressure): 10 bar

DIMENSIONS					
	Fittings Ø R	A	B	C	D
	[ " ]	[ mm ]	[ mm ]	[ mm ]	[ mm ]
	1/8	32	56,5	14	35,5
	1/4	38	60	16	35,5

ORDER CODE

VE	131.4		V	[V] [Hz] / d.c.							
COMPLETE VALVE	FITTINGS	B 1/8" F 1/4" G 1/4"	SEAL	V Viton	Coil type	24 V 50 Hz*	115V 50 Hz*	220-230 V 50 Hz*	240 V 50 Hz*	12 V d.c.	24 V d.c.
					KT 09	●	●	●	●		
					KT 10					●	●
					KH 09		●	●			

\* models with 60 Hz availables

\* models with 60 Hz availables

Note: Valve supplied with coil in a multipack. Connector to be ordered separately.



Parker Hannifin S.p.A